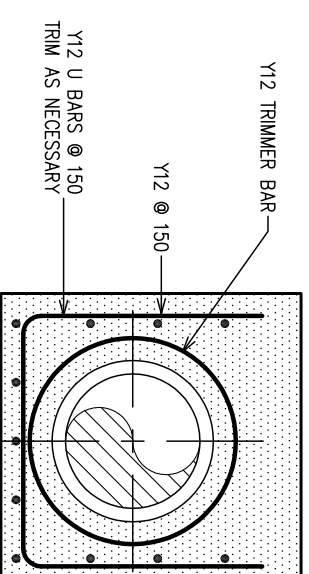
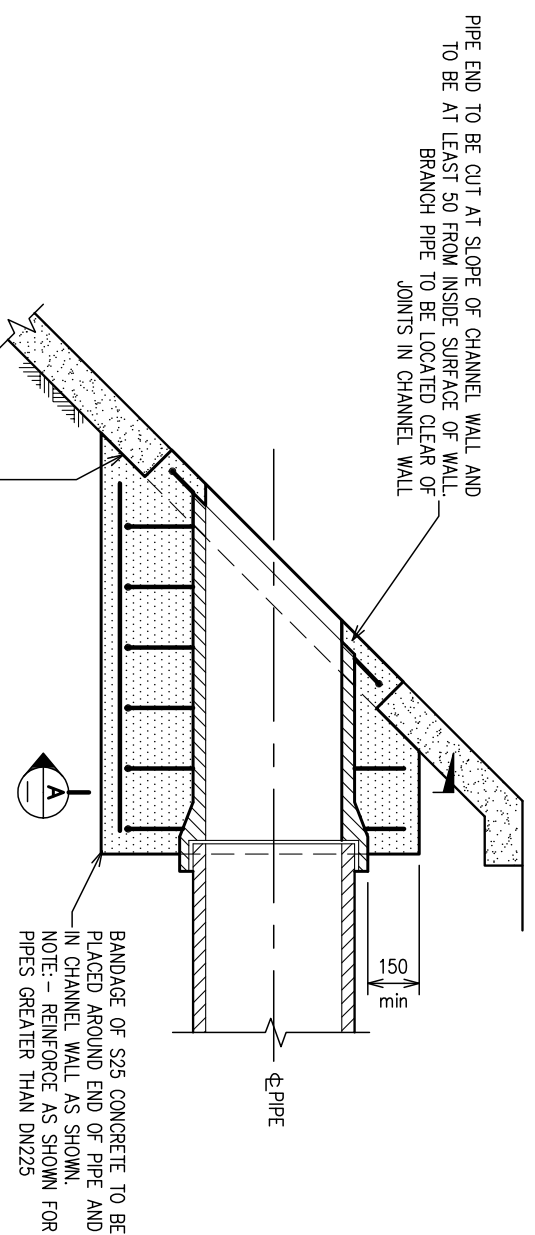


PLAN ON CENTRELINE OF BRANCH PIPE



SECTION A

NOTES:

1. APPROVAL TO CONNECT TO A HUNTER WATER CORPORATION STORMWATER ASSET IS CONDITIONAL ON THE RELEVANT LOCAL COUNCIL REVIEWING AND APPROVING INTERNAL STORMWATER DRAINAGE DESIGNS. SUCH APPROVAL MUST BE EVIDENCED TO HUNTER WATER PRIOR TO GRANTING APPROVAL TO CONNECT TO HWC STORMWATER SYSTEMS.
2. HYDRAULIC DISTURBANCE AND SMOOTH INTEGRATION OF FLOW IN THE STORMWATER SYSTEM ARE TO BE CONSIDERED FOR ALL CONNECTIONS. IN GENERAL ALL CONNECTIONS SHOULD BE MADE AT A MAXIMUM ENTRANCE OF 45° TO THE MAIN CHANNEL FLOW.
3. THIS STANDARD CONSTRUCTION PRACTICE DRAWING APPLIES ONLY TO CONNECTIONS WHERE THE INCOMING PIPE IS NOT GREATER THAN 300mm IN DIAMETER

ELEVATION ON CENTRELLINE OF BRANCH PIPE

<p>STANDARD CONSTRUCTION PRACTICE DRAINAGE STANDARD</p>		<p>STANDARD METHOD FOR PIPE CONNECTIONS TO TRAPEZOIDAL STORMWATER CHANNEL</p>	
<p>HUNTER WATER CORPORATION A.C.N. 053 102 837</p>		<p>CAD FILE NAME: DCP-200 HWCS</p>	
<p>REV. N°</p>	<p>REVISION</p>	<p>APPROVED</p>	<p>DATE</p>
<p>© COPYRIGHT HUNTER WATER CORPORATION LIMITED.</p>	<p>APPROVED MANAGER CEC CONSULTING ENGINEERS</p>	<p>APPROVED MANAGER PLANNING AND DEVELOPMENT</p>	<p>ISSUED: 2003</p>
			<p>A3</p>